

Quilt



Quilt is the smartest way to heat and cool your home



A single system made of four parts

Indoor unit



Outdoor unit



Quilt Dial

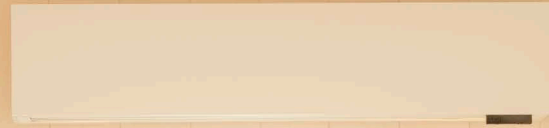


App



Small in size, big in efficiency

At only 7 7/8 in (20 cm) tall, our indoor units are built to fit into more spaces, blend in with your home style, and save you energy.

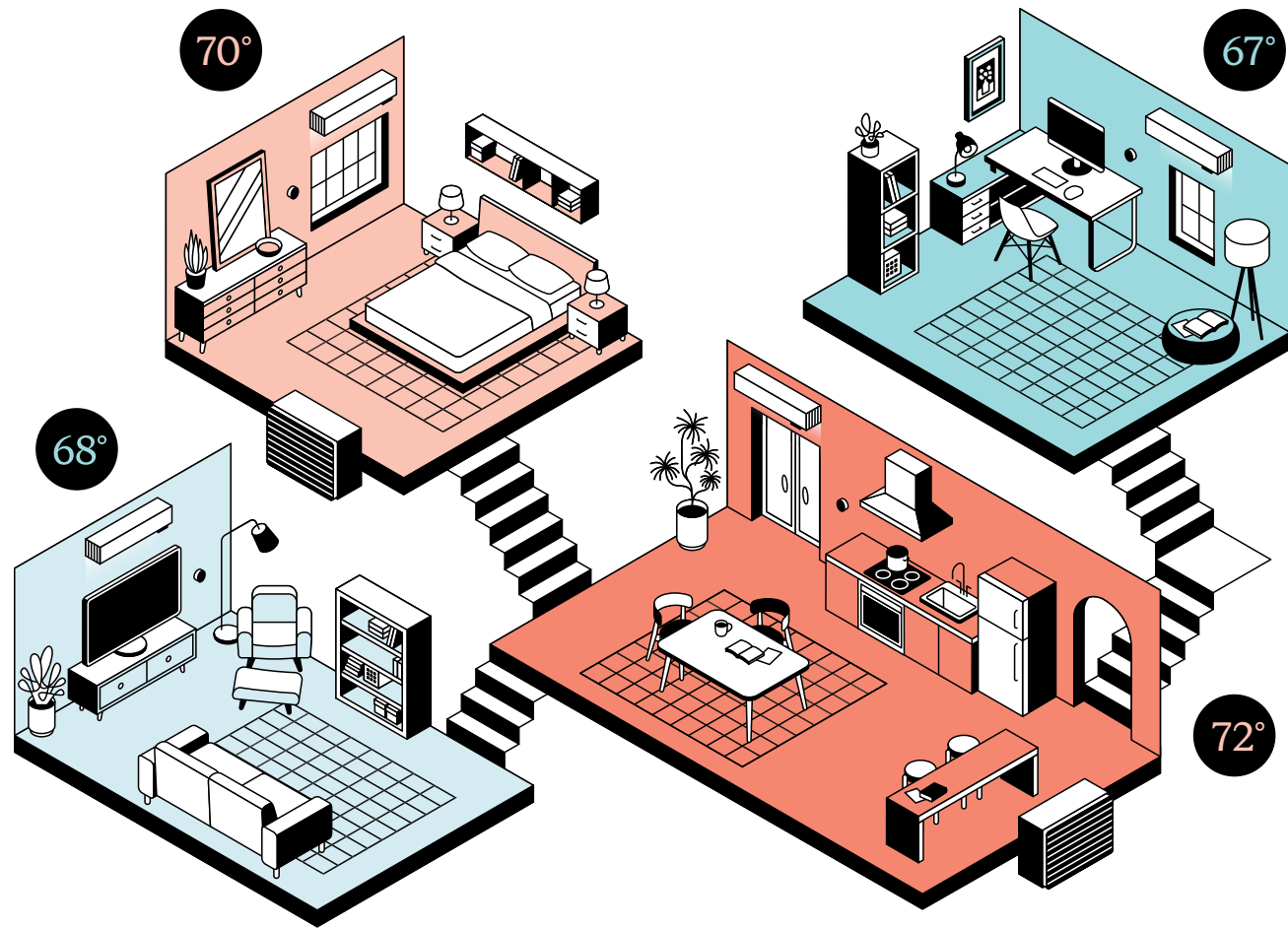


71



A Quilt Dial in every room

Room-by-room and whole home temperature control with the swipe of a finger.



Year-round comfort

Stay cool in the summer and cozy in the winter. Our outdoor unit performs at 100% capacity down to -5°F (-21°C).



The first smart heat pump

Quilt's schedules and occupancy detection save energy in empty rooms, cutting waste and lowering bills. Track energy usage in real-time while over-the-air updates continuously deliver new features and enhanced performance.



Quilt blends right in

Customize the cover of your indoor unit, which can be painted and wallpapered.



Accent lighting

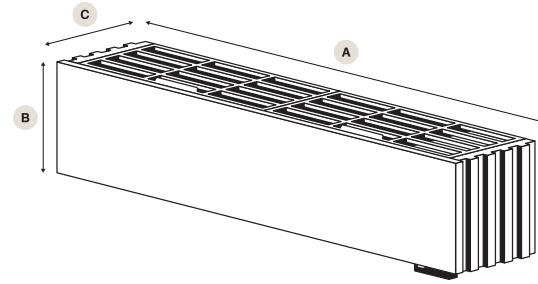
Change the color and brightness of the built-in accent light to set the mood.



Key dimensions

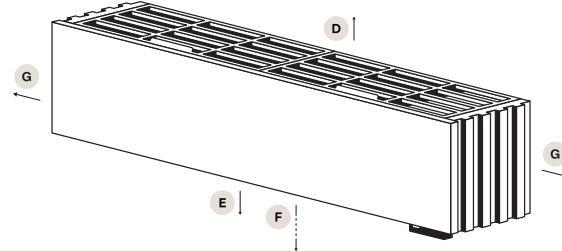
Indoor unit

A Width*	38 ¼ in (971 mm)
B Height*	7 ⅞ in (200 mm)
C Depth*	8 ⅜ in (207 mm)
Weight	24 ½ lbs (11 kg)



Recommended unit clearances

D From ceiling	4 in (102 mm)
E Below unit	18 in (457 mm)
F From floor	6 ft (1.8 m)
G Sides	6 in (152 mm)

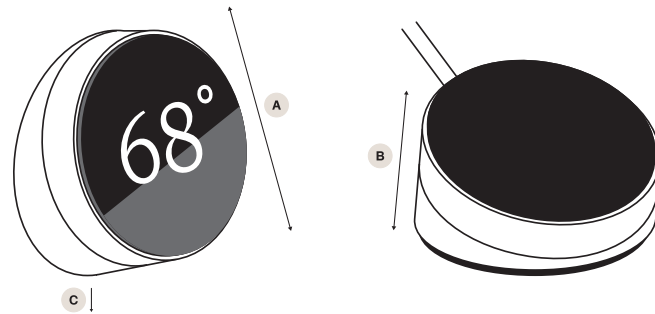


Dial

A Diameter	2 ⅜ in (58 mm)
B Depth	1 ¼ in (32 mm)

Recommended clearance when mounted

C From floor	3 to 5 ft (0.9 to 1.5 m)
---------------------	--------------------------

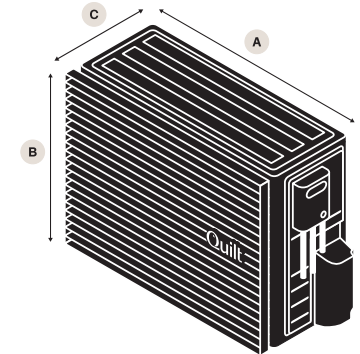


* Overall visual dimensions of the unit. Small features extend past this envelope.

Key dimensions

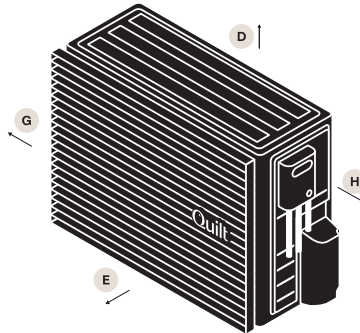
2-zone outdoor unit

A Width*	35 ⅛ in (890 mm)
B Height*	26 ⅞ in (675 mm)
C Depth*	15 ⅜ in (402 mm)
Weight	110 ¼ lbs (50 kg)



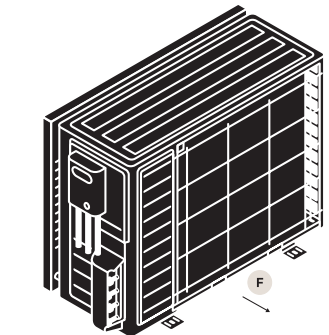
3-zone outdoor unit

A Width*	36 ⅞ in (929 mm)
B Height*	30 ⅞ in (773 mm)
C Depth*	14 ⅞ in (370 mm)
Weight	143 ¼ lbs (65 kg)



Required unit clearances

D Above	12 in (305 mm)
E Front	20 in (508 mm)
F Back	4 in (102 mm)
G Left side	4 in (102 mm)
H Right side	14 in (356 mm)



* Overall visual dimensions of the unit. Small features extend past this envelope.



System performance

Quilt is designed to be the most efficient way to heat and cool your home. Our performance metrics exceed industry standards, qualifying you for the maximum amount of rebates.

	2-zone system QO1-M2Z18-NC-NA	3-zone system QO1-M3Z27-NC-NA
SEER2	25	25.3
HSPF2 (Region IV)	12	12
HSPF2 (Region V)	9.5	9.5
CEE TIER (2025)	Tier 1 Path A & B	Tier 1 Path A & B
Energy Star™ Cold Climate	Yes	Yes
Cooling capacity range (BTU/h)	2,900 to 24,000 @ 95°F (35°C) 1,800 to 12,000 @ 95°F (35°C) per indoor unit when 2 are running simultaneously	4,350 to 32,000 @ 95°F (35°C) 2,175 to 12,750 @ 95°F (35°C) per indoor unit when 2 are running simultaneously; 1,570 to 10,670 @ 95°F (35°C) per indoor unit when 3 are running simultaneously
Heating capacity range (BTU/h)	3,400 to 25,200 @ 47°F (8°C) 2,100 to 12,600 @ 47°F (8°C) per indoor unit when 2 are running simultaneously	6,140 to 40,200 @ 47°F (8°C) 3,070 to 15,250 @ 47°F (8°C) per indoor unit when 2 are running simultaneously; 2,210 to 13,400 @ 47°F (8°C) per indoor unit when 3 are running simultaneously

Rated in accordance with AHRI standard 210/240 (AHRI #214609234)

Quilt Intelligence makes our system even more efficient. Features like occupancy detection and schedules help save energy and lower your monthly electric bill.

RATING CONDITIONS
Cooling
Outdoor: DB/WB 95.0/75.0
Indoor: DB/WB 80.0/67.0

Heating
Outdoor: DB/WB 47/43
Indoor: DB/WB 70/60



Outdoor unit performance

The compact 2-zone outdoor unit can power up to 2 indoor units quietly and efficiently, and the 3-zone outdoor unit powers 3 indoor units while maintaining high efficiency and low turndown.



The outdoor unit must be connected directly to the electrical panel. A single phase 208 or 230 volt circuit breaker rated to a minimum of 20A and maximum of 25A is required.

The outdoor unit must be anchored to a concrete pad, elevated base, or metal wall bracket using anchors with a minimum pull-out force of 150 lbs (68 kg).

Cooling

	2-zone system QO1-M2Z18-NC-NA	3-zone system QO1-M3Z27-NC-NA
Min capacity (BTU/h)	2,900 @ 95°F (35°C) 1,800 @ 95°F (35°C) per indoor unit when 2 are running simultaneously	2,900 @ 95°F (35°C) 2,175 @ 95°F (35°C) per indoor unit when 2 are running simultaneously; 1,570 @ 95°F (35°C) per indoor unit when 3 are running simultaneously
Max capacity (BTU/h)	24,000 @ 95°F (35°C) 12,000 @ 95°F (35°C) per indoor unit when 2 are running simultaneously	32,000 @ 95°F (35°C)
Rated capacity (BTU/h)	16,000 @ 95°F (35°C)	24,000 @ 95°F (35°C)
Rated COP	4 @ 95°F (35°C)	4 @ 95°F (35°C)

Heating

	2-zone system QO1-M2Z18-NC-NA	3-zone system QO1-M3Z27-NC-NA
Min capacity (BTU/h)	3,400 @ 47°F (8°C) 2,100 @ 47°F (8°C) per indoor unit when 2 are running simultaneously	6,140 @ 47°F (8°C) 3,070 @ 47°F (8°C) per indoor unit when 2 are running simultaneously; 2,210 @ 47°F (8°C) per indoor unit when 3 are running simultaneously
Max capacity (BTU/h)	25,200 @ 47°F (8°C) 12,600 @ 47°F (8°C) per indoor unit when 2 are running simultaneously	40,200 @ 47°F (8°C)
Rated capacity (BTU/h)	18,000 @ 47°F (8°C)	27,000 @ 47°F (8°C)
Cold weather capacity (BTU/h)	18,000 @ 5°F (-15°C) 18,000 @ -5°F (-21°C) 16,000 @ -13°F (-25°C)	30,000 @ 5°F (-15°C) 28,200 @ -5°F (-21°C) 23,900 @ -13°F (-25°C)
Rated COP	4 @ 47°F (8°C) 2 @ 5°F (-15°C)	4.2 @ 47°F (8°C) 2 @ 5°F (-15°C)

LEARN MORE

[Quilt.com](https://www.quilt.com)

YOUTUBE / INSTAGRAM

[@MeetQuilt](#)